



**Massachusetts Online  
Network for Education**

# ***An Introduction***

*Updated 2009*

<http://massone.mass.edu/>





## ***What is MassONE?***

MassONE is the Commonwealth's set of web-based tools designed to support PreK-12 standards-based teaching and learning.

## ***Who can use MassONE?***

Massachusetts students, teachers, administrators, members of educational organizations, and Department of Elementary and Secondary Education staff can get accounts on MassONE, creating ONE statewide learning community.

## ***How can MassONE be used?***

Here are a just a few examples:

- Students can participate in online discussion forums set up by their teachers.
- Teachers can use MassONE to create and store high quality, standards-based lesson plans.
- District staff can collaboratively develop documents such as grant applications and budgets using MassONE.
- School districts and educational organizations can use MassONE to host their online workshops or courses.
- All users can store files on MassONE so they can work at school, at home, or anywhere they can access the Internet.



## ***What tools does MassONE offer?***

MassONE offers a collection of tools that educators can use to enrich classroom learning, provide online instruction, and enhance their ability to collaborate with their peers.

- Announcements Tool
- Virtual Hard Drive (VHD)
- Survey Tool
- Discussion forums
- Teaching and Learning Resources
- Curriculum Tools
- Technology Self-Assessment Tool

## ***What are some benefits of using MassONE?***

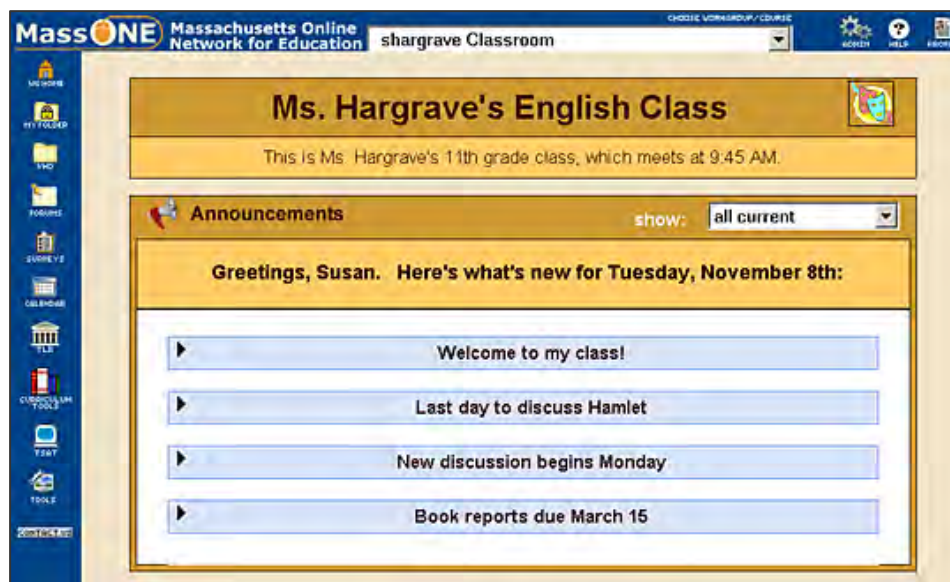
MassONE allows users to communicate and collaborate in a secure online environment. With MassONE, you can take advantage of technology's ability to engage students, increase productivity, and provide increased access to resources.

## ***How do we register for MassONE?***

Membership in MassONE is open to students, teachers, administrators, staff of registered educational organizations, and Department of Elementary and Secondary Education staff. To learn more, click the appropriate link on the MassONE web site (<http://massone.mass.edu/>).

MassONE is structured around learning communities, called workgroups. After logging in to MassONE, users select a workgroup to interact with, using the "Choose Workgroup/Course" drop-down menu. They then see the workgroup's main page, which contains all of the announcements for that workgroup. They also have access to the workgroup's discussion forum, Virtual Hard Drive, and any surveys created for the workgroup.

Teachers, school administrators, and organizations can set up their own workgroups, allowing them to run workshops, courses, discussions, and collaborative projects.



## Announcements Tool

The administrator of a workgroup can post announcements, which users see when they select the workgroup from the drop-down menu.

This is a good place to post instructions and general information about using the online environment for a class or collaborative project.

## Discussion Forums

Each workgroup has its own discussion forum, which only they can access.

Teachers can use the forums to host online discussions or debates with their students.

Districts and educational organizations can use the forums for professional development workshops.

Educators can also participate in statewide forums on specific topics.



## Virtual Hard Drive

Each workgroup has its own Virtual Hard Drive (VHD), where members can store and share documents and web sites. Teachers can collect students' assignments using the Drop Box.

Students can use the VHD to work together on projects such as multimedia presentations.

Educators can use the VHD to collaboratively develop documents such as grant applications and lesson units.



## My Folder

Every individual MassONE user also has a personal Virtual Hard Drive, making it possible to store and access files from home, a local library, or any place with Internet access. Students and educators can use their folders to access their work outside of school hours without the need to carry disks or other storage media.

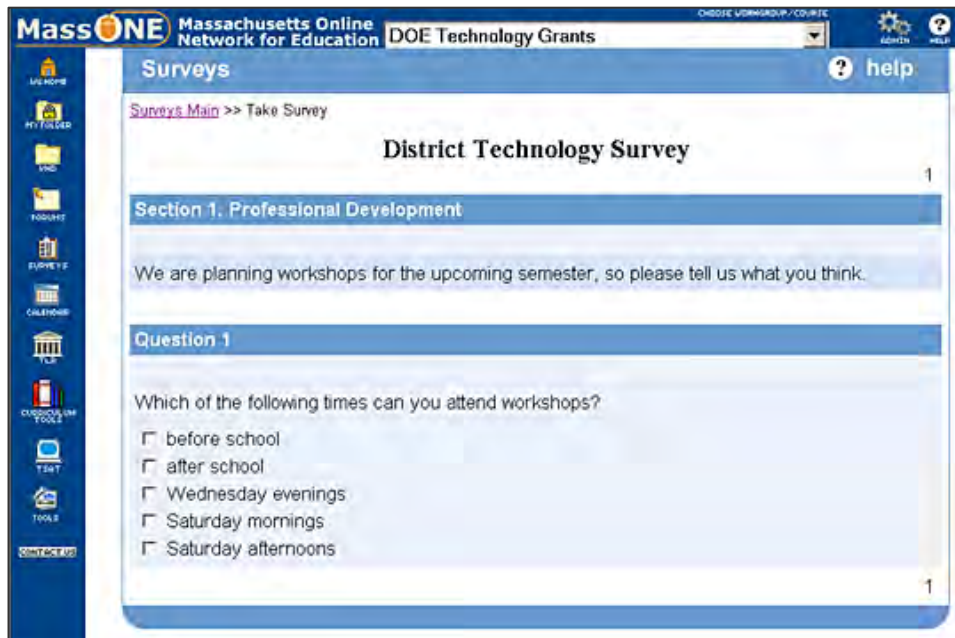
Teachers and students can also use their personal folders to develop portfolios of their work.





## More Tools for Learning Communities

MassONE also offers a survey creation tool. This tool makes it possible to quickly construct an online survey, offer it to members of a workgroup, and then access survey results for the workgroup.



### Survey Tool

A workgroup's administrator can create online surveys for the workgroup.

Administrators can use this tool to gather input from staff throughout the district.

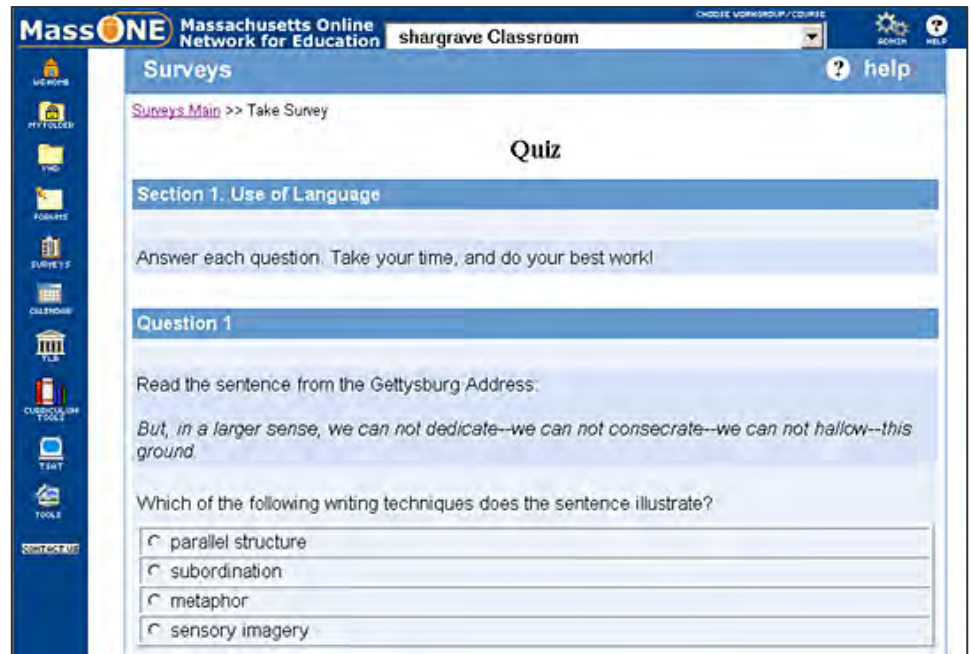
Professional development providers can use this tool to assess the knowledge of participants prior to a workshop.

## More Survey Uses

Teachers can use the survey tool to create quizzes that students can complete online.

Teachers can also use surveys in math and science lessons in which students need to gather and analyze data.

Surveys can include up to eight types of questions: true-false, multiple choice, short answer, long composition, check all that apply, numeric response, data table, and Likert scale.



The screenshot displays the MassONE interface for a classroom named 'shargrave Classroom'. The main content area is titled 'Surveys' and shows a 'Quiz' in progress. The quiz is divided into sections, with the first section being 'Section 1. Use of Language'. Below this section, there is an instruction: 'Answer each question. Take your time, and do your best work!'. The first question, 'Question 1', asks the user to read a sentence from the Gettysburg Address: 'But, in a larger sense, we can not dedicate--we can not consecrate--we can not hallow--this ground.' The question then asks, 'Which of the following writing techniques does the sentence illustrate?'. There are four radio button options: 'parallel structure', 'subordination', 'metaphor', and 'sensory imagery'. The interface includes a sidebar with various icons for navigation and a top navigation bar with the MassONE logo and user information.

MassONE Massachusetts Online Network for Education DOE Technology Grants

### Technology Self Assessment Tool

#### Using the Technology Self Assessment Tool

If this is the first time you are taking this assessment, you will begin at "Early Technology". The assessment presents a list of skills with check boxes. Check a skill if you are able to do all of the examples given. To begin, click "View or Take the TSAT".

You can take the assessment as many times as you wish. If you have already taken it, your results will appear below. When you have mastered a skill level, use the drop-down menu to select the next level.

You can preview the skills list for any level by clicking "View or Take the TSAT". If you have already taken the assessment for that level, you will see your responses. You may wish to print out the skills list to help focus your professional development efforts.

**Please complete the lower level before moving on to the next level.**

Choose a Skill Level: Early Technology View or Take the TSAT

**Your results:**

	Technology Operations and Concepts	Ethics and Safety	Teaching & Learning with Technology	Mastered?
Early Technology	100.0%	100.0%	100.0%	yes - Congratulations!
Developing Technology	22.5%	0.0%	0.0%	not yet
Proficient	0%	0%	0%	not yet
Advanced	0%	0%	0%	not yet

## Technology Self-Assessment Tool

MassONE also offers a specialized survey just for educators, called the Technology Self-Assessment Tool (TSAT).

The tool can aggregate teacher data (anonymously) for a school or district, allowing technology leaders to see where the need for professional development is greatest.

Districts can also aggregate data for specific workgroups, such as teachers who took part in a series of technology workshops; they can then compare data from before and after the workshops.

The TSAT reports the percentage of teachers in a workgroup who report mastery of each of the skills.

The TSAT allows individual teachers to quickly find out which skills they need to acquire in order to best use technology in their teaching.

The TSAT is not a test but a checklist of skills divided into four levels.

MassONE Massachusetts Online Network for Education MA

### Technology Self Assessment Tool

#### Technology Self Assessment Tool - Proficient

Back to Main Page

#### Technology Operations and Concepts

- Save (also retrieve, load, and import) documents in different file formats (e.g., RTF, HTML) to facilitate file sharing.
- Use a variety of external peripherals (e.g., digital camera, camcorder, CD-RW, scanner) and connect them to a computer.
- Resolve commonly occurring technology problems, and use proper terminology for communicating them (e.g., frozen screen, disk error, printing problems).
- Identify, download and use multimedia, graphic, sound and video files.
- Install new software from a variety of sources (e.g., CD, downloads, plug-ins and applications) per district policies.
- Use built-in calculating functions in a spreadsheet application.
- Customize formatting of charts or graphs created in spreadsheet. Define and use built-in data functions of a spreadsheet such as sort, filter, find.
- Perform simple operations in a database (e.g., keyword, sort, search, delete, add data).

MassONE offers a suite of curriculum tools to help educators create standards-based lesson plans. These tools include the Create Lesson Plan tool, where users can enter information such as key concepts, activities, and assessment strategies. Also included is a standards database, which allows users to quickly identify the curriculum or vocational standard(s) that the lesson focuses on.



## Create Lesson Plan Tool

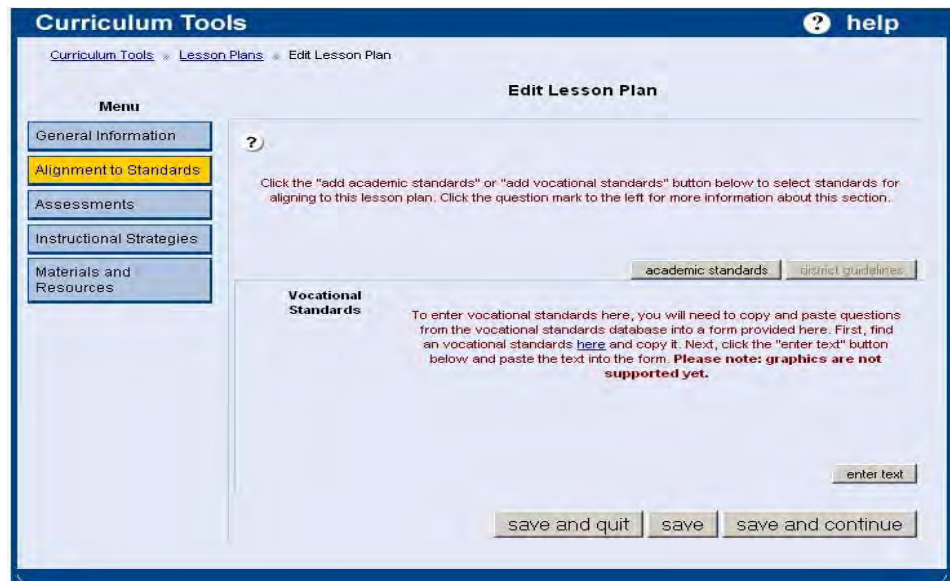
In the first screen of the lesson-planning template, the teacher enters information such as key concepts, activities, and assessment strategies.

On the next screen, the teacher selects the standards that are the focus of the lesson.

This screen links to MassONE's database of the state curriculum frameworks.

On later screens, the teacher will enter information about standards, assessments, instructional strategies, and related resources.

The Vocational Technical Frameworks are linked to the public web page and can be copied and pasted into the lesson plan.





## Standards Search Tool

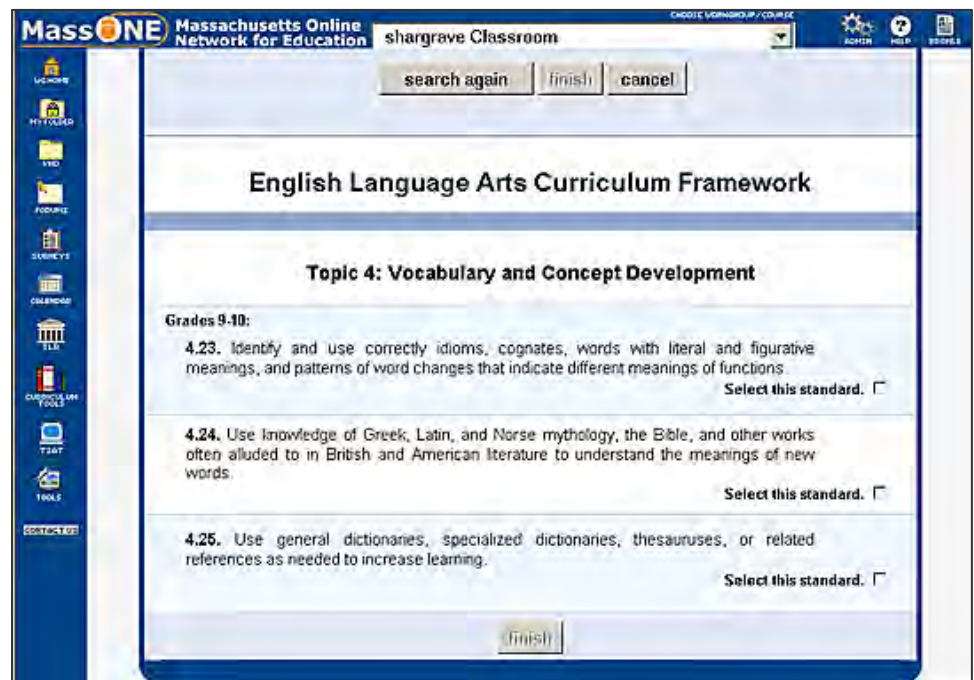
Massachusetts curriculum standards are integrated into the lesson-planning tool, allowing teachers to quickly identify the standard(s) for a lesson plan they are creating.

Educators can search by discipline, grade, strand or course, and topic.

The [Standards Search Tool](https://massone.doemass.org/cli/startupAction.do) is also available on the Department's web page (<https://massone.doemass.org/cli/startupAction.do>).

This screen shows the results of the standards search. Here the teacher selects the standards that will be the focus of the lesson. The selected standards will be automatically inserted into the lesson plan.

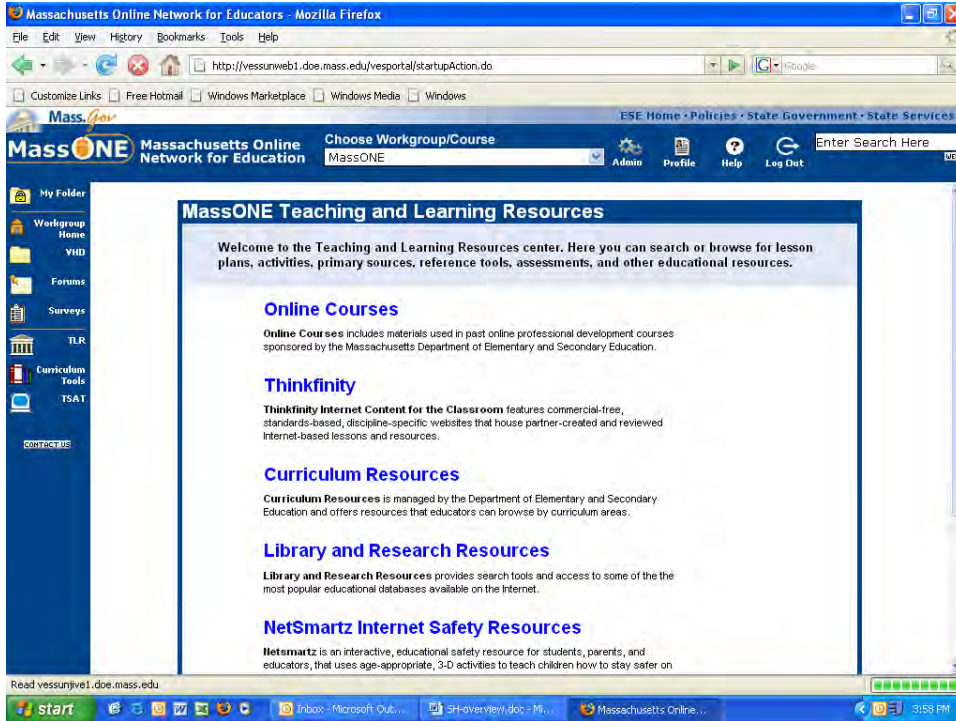
Educators can also use the standards database independently of the lesson-planning template. A teacher can do a search for all of the standards for a particular grade and subject, while a curriculum director might want to search all of the standards in a strand, in order to view the progression from one grade to the next.





# More Curriculum Tools and Resources

MassONE offers a rich collection of lesson plans, activities, and resources, which are found within the Teaching and Learning Resources (TLR).



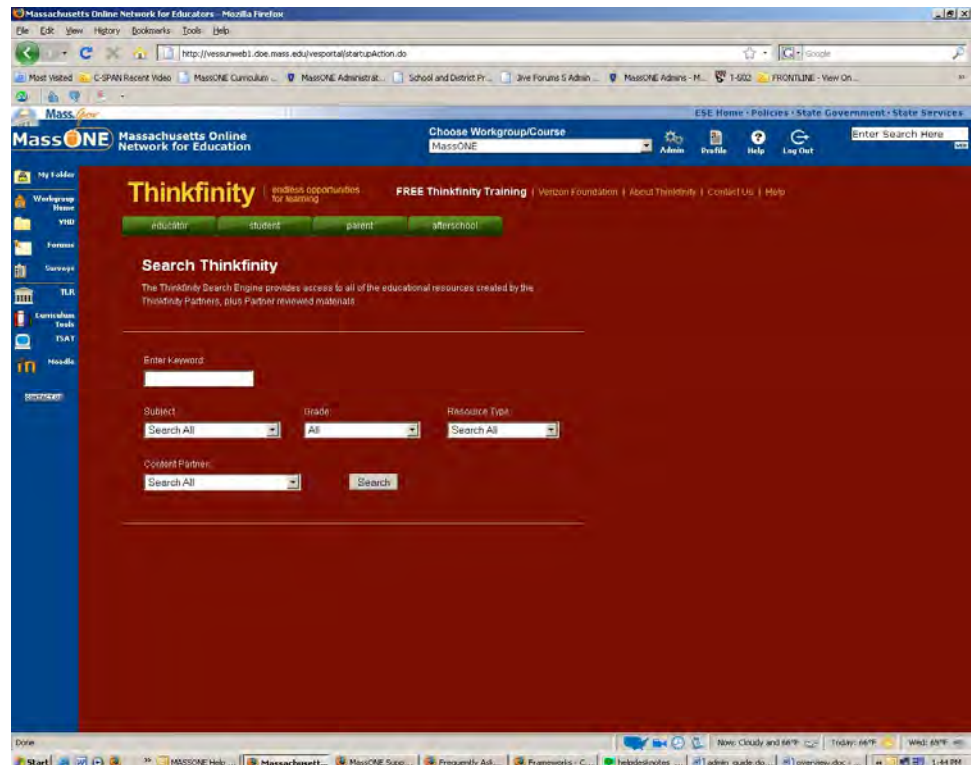
## Teaching and Learning Resources (TLR)

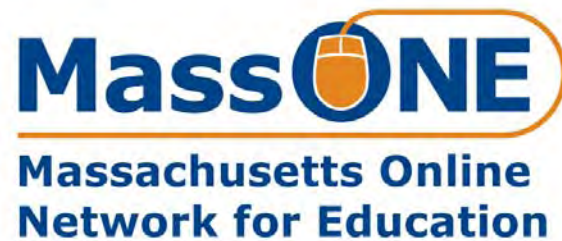
Educators can search or browse through collections of curriculum and research resources. The TLR also includes resources for teaching students about safe practices for Internet use.

**Thinkfinity**, one of the resources in the TLR, offers over 55,000 standards-based, grade-specific resources. All of these resources were created or reviewed by leading national educational organizations.

Thinkfinity's search tool allows educators to search by subject, keyword, grade level, and resource type. Types of resources include lessons, interactives, primary sources, worksheets, reference materials, media, and assessments.

The Massachusetts Department of Elementary and Secondary Education has been working with Thinkfinity to align these resources with the state Curriculum Frameworks. As a result, many of Thinkfinity's resources include a list of the Massachusetts standards that are addressed.





*Massachusetts Department of Elementary and Secondary Education  
75 Pleasant St. Malden, MA 02148-5023  
<http://massone.mass.edu/>  
781-338-3020  
[massonehelp@doe.mass.edu](mailto:massonehelp@doe.mass.edu)*